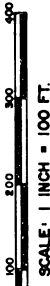


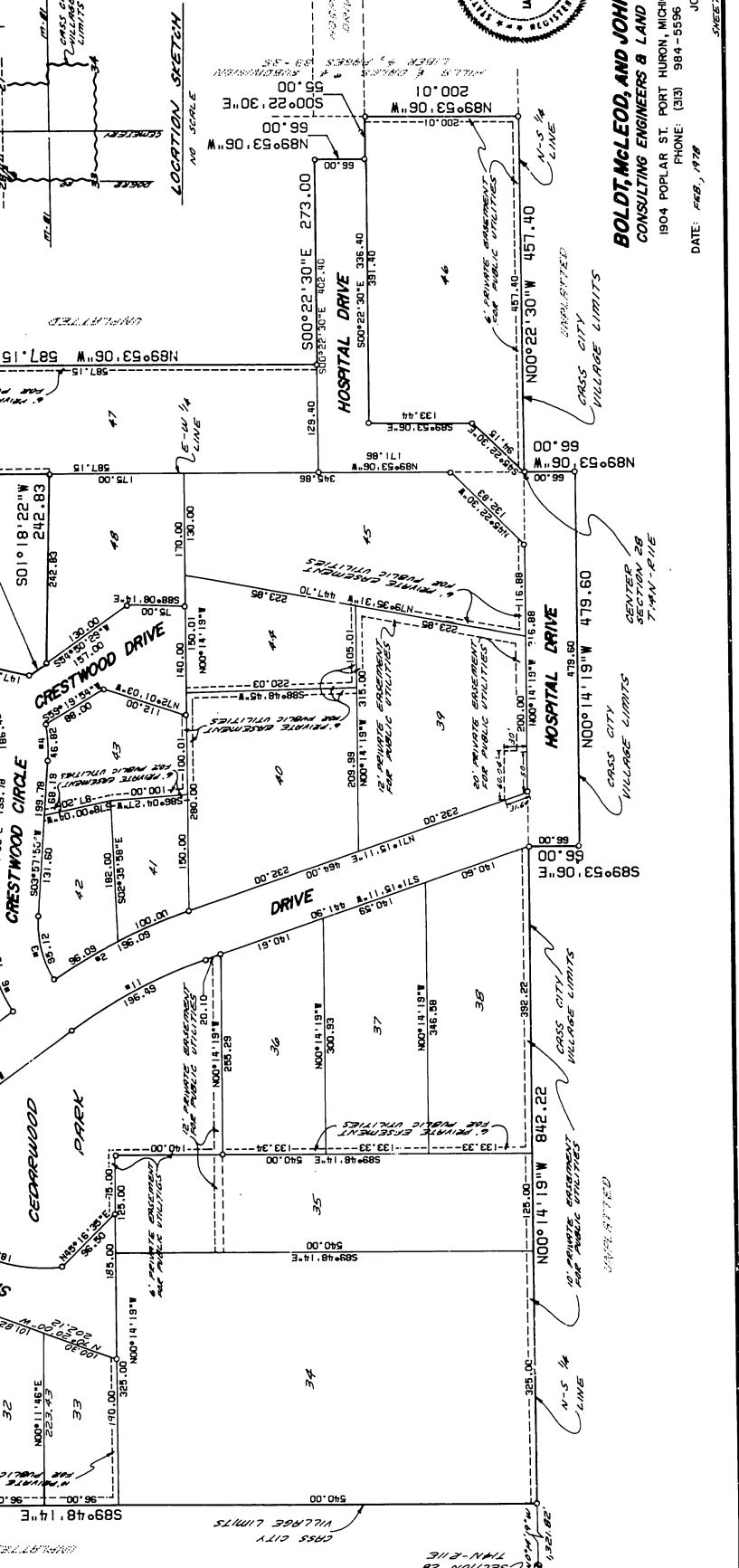
# NORTHWOOD VILLAGE & ESTATES NO. 1

BEING A PART OF THE NE 1/4, NW 1/4 AND SE 1/4 OF SECTION 28,  
T 14 N - R 11 E, VILLAGE OF CASS CITY, TUSCOLA COUNTY, MICHIGAN

NUMBER	RADIUS	ARC	DELTA	CHORD	BRNS
1	125.00	01°14'00"	01°14'00"	21.41	21.41
2	125.00	01°14'00"	01°14'00"	21.41	21.41
3	125.00	01°14'00"	01°14'00"	21.41	21.41
4	125.00	01°14'00"	01°14'00"	21.41	21.41
5	125.00	01°14'00"	01°14'00"	21.41	21.41
6	125.00	01°14'00"	01°14'00"	21.41	21.41
7	125.00	01°14'00"	01°14'00"	21.41	21.41
8	125.00	01°14'00"	01°14'00"	21.41	21.41
9	125.00	01°14'00"	01°14'00"	21.41	21.41
10	125.00	01°14'00"	01°14'00"	21.41	21.41
11	125.00	01°14'00"	01°14'00"	21.41	21.41



**PLAN LEGEND**  
 All dimensions are shown in feet.  
 All curvilinear dimensions are shown along the arc.  
 All bearings are in relation to the bearings in Hills & Bales #4 plat, Liber 4, Page 33 thru 35 and Hillcrest Subdivision on the South, Liber 4, Page 43 on the symbol set indicates a center line.  
 All lot markers are 1/2" iron pipes and are 18" long.  
 (R) Denotes Radial  
 (N.R.) Denotes Not Radial



**BOLDT, McLEOD, AND JOHNSON INC.**  
 CONSULTING ENGINEERS & LAND SURVEYORS  
 1904 POPLAR ST. PORT HURON, MICHIGAN, 48060  
 PHONE: (313) 984-5656  
 DATE: FEB, 1978